



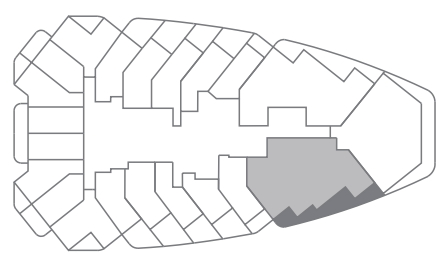
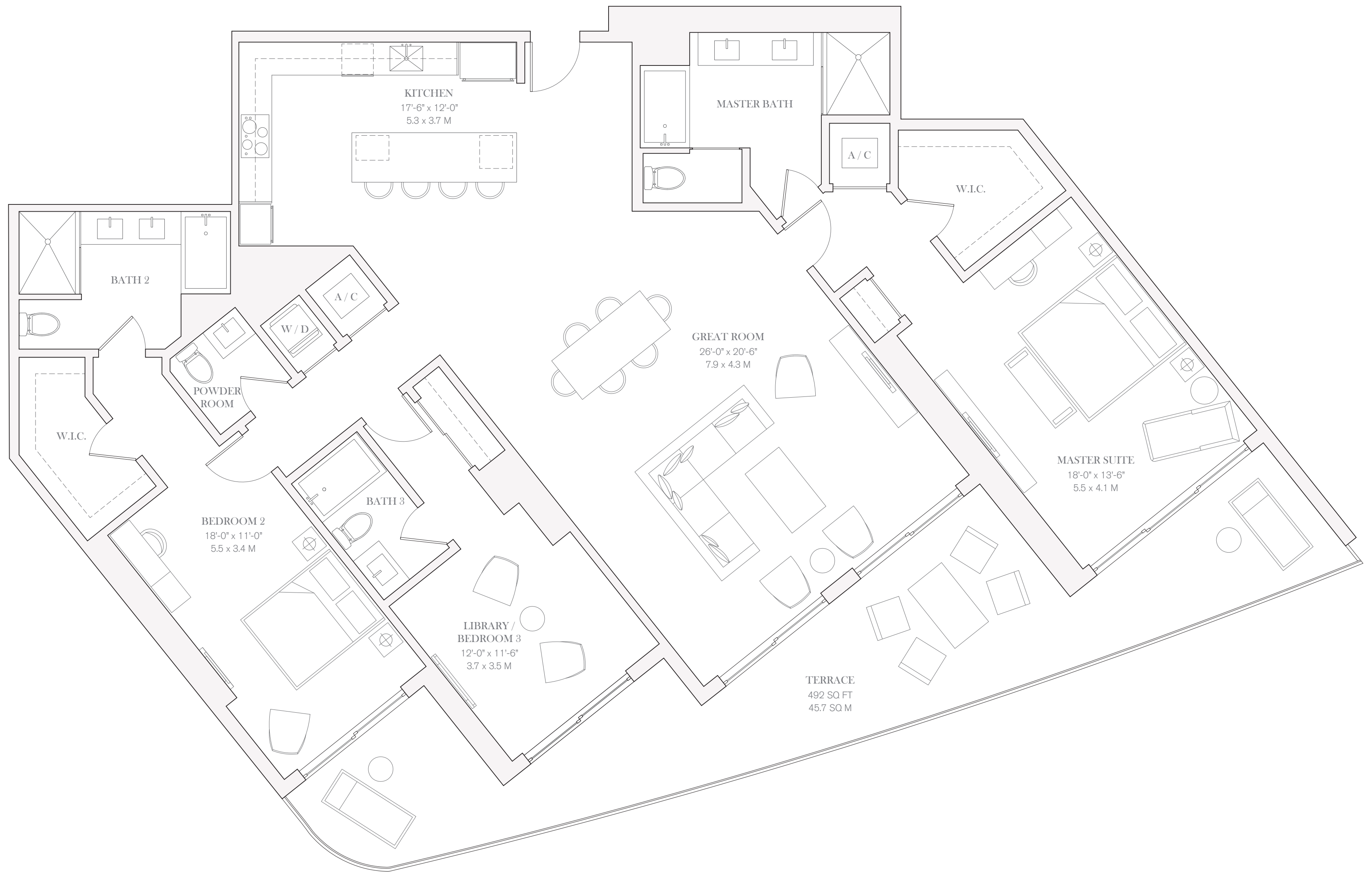
FOUR SEASONS
HOTEL AND PRIVATE RESIDENCES
Fort Lauderdale
A PROJECT BY FORT PARTNERS

**PRIVATE
RESIDENCE**

703, 803, 903, 1003, 1103

THREE BEDROOMS
THREE BATHROOMS
POWDER ROOM

INTERIOR
2,340 SQ FT / 217.4 SQ M
EXTERIOR
492 SQ FT / 45.7 SQ M



OCEAN VIEW



0 1 2 4 8