



**FOUR SEASONS**  
HOTEL AND PRIVATE RESIDENCES

*Fort Lauderdale*

A PROJECT BY FORT PARTNERS

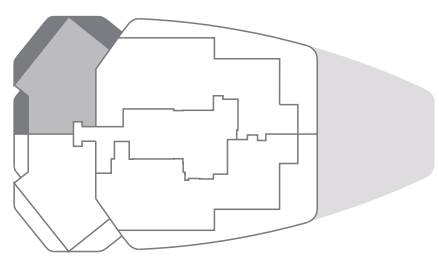
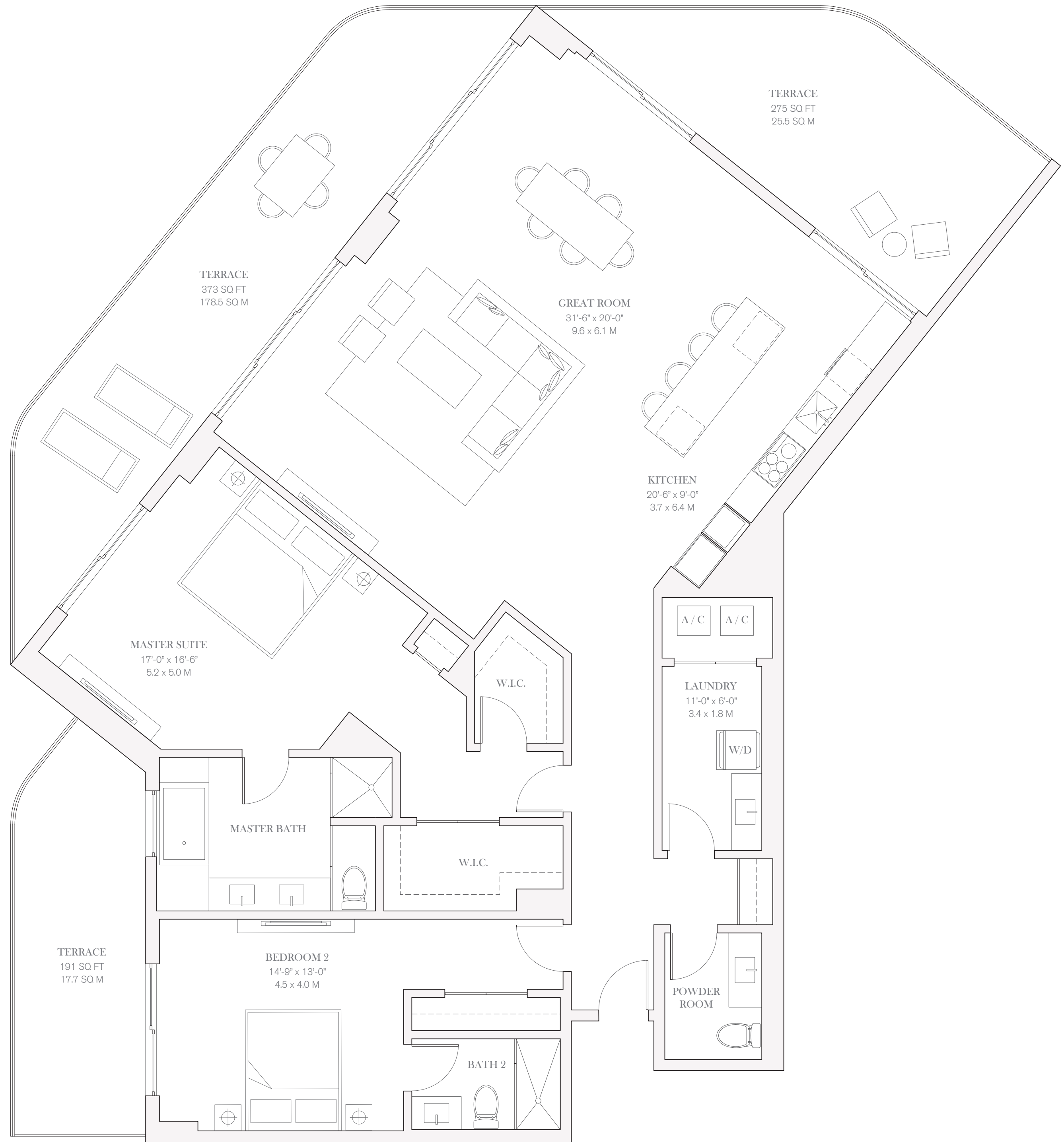
**PRIVATE  
RESIDENCE**

**1804, 1904, 2004**

TWO BEDROOMS  
TWO BATHROOMS  
POWDER ROOM

INTERIOR  
2,242 SQ FT / 208.3 SQ M

EXTERIOR  
838 SQ FT / 77.9 SQ M



OCEAN VIEW



0 1 2 4 8